



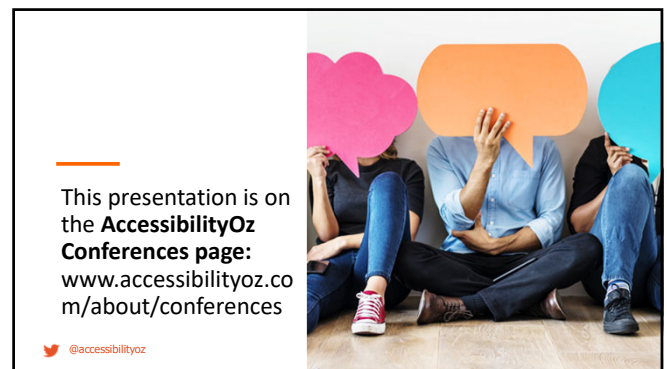
1



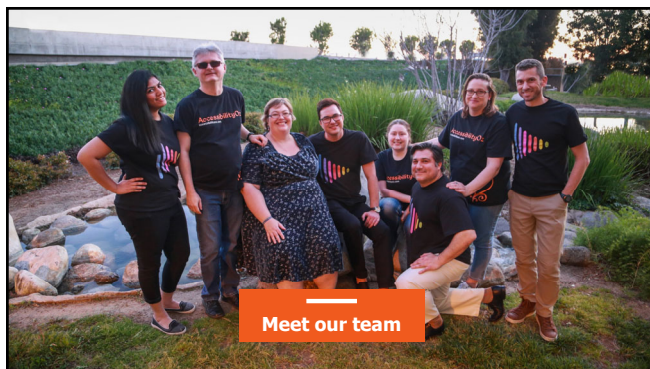
2



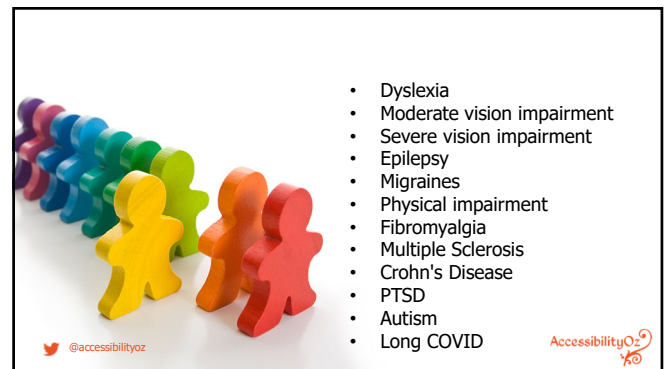
3



4



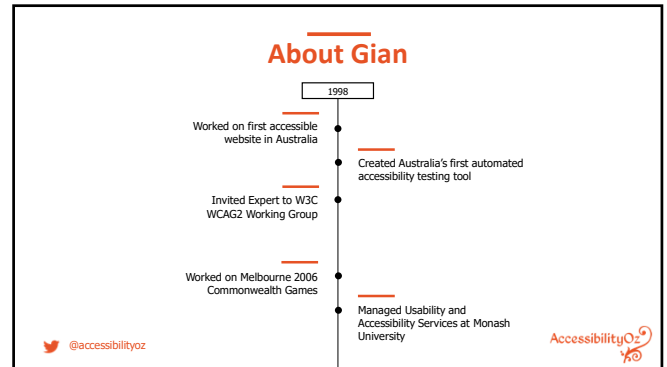
5



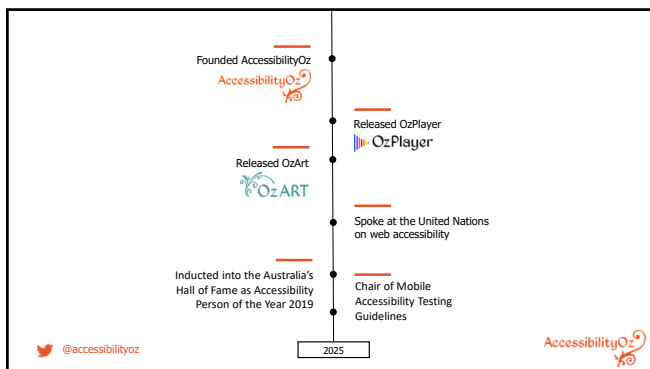
6



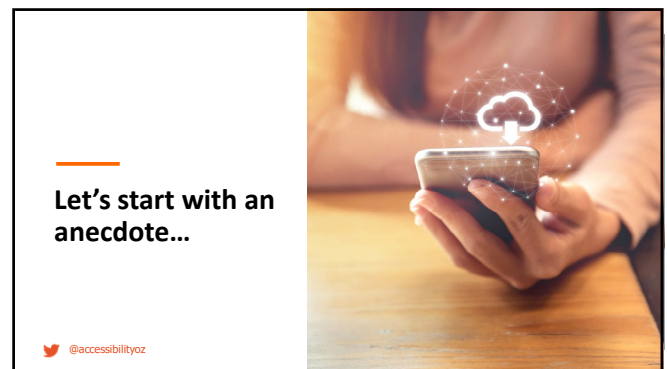
7



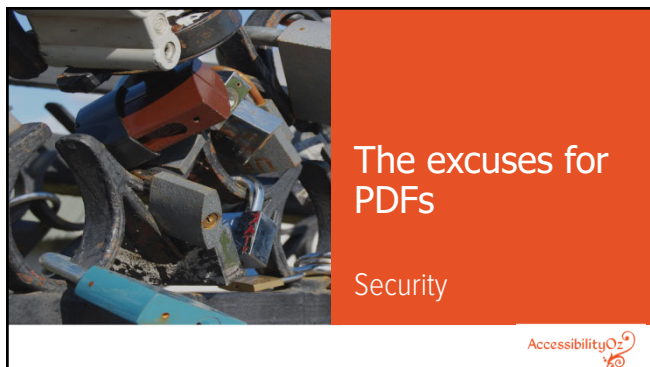
8



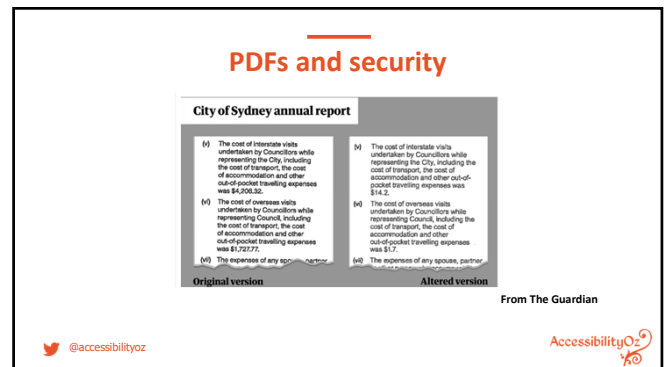
9



10



11



12

DDA Web Advisory Notes

Some file formats provide **mechanisms for enhancing the security of documents** by preventing unauthorised editing, copying, or printing. **Some of these mechanisms are not compatible with accessibility for people with a disability**, and document authors should **ensure that security features do not prevent access to the document by assistive technology**.

@accessibilityoz

AccessibilityOz

13

DDA Web Advisory Notes

If there are concerns about ensuring the authenticity of material published on the web in multiple formats, then a **statement should be included that specifies which format is to be regarded as definitive or authorised**, and noting that additional formats are being provided to maximise access.

@accessibilityoz

AccessibilityOz

14

What's more
secure than
PDFs?



15

What about
CAPTCHA?

@accessibilityoz



16

1.1.1: Non-text Content

All non-text content that is presented to the user has a text alternative that serves the equivalent purpose, except for the situations listed below.

- **CAPTCHA**

If the purpose of non-text content is to confirm that content is being accessed by a person rather than a computer, then text alternatives that identify and describe the purpose of the non-text content are provided...

@accessibilityoz

AccessibilityOz

17

1.1.1: Non-text Content

- ... and alternative forms of CAPTCHA using output modes for different types of sensory perception are provided to accommodate different disabilities.

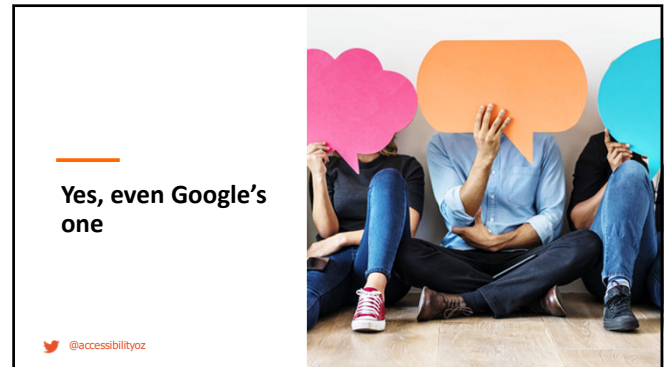
@accessibilityoz

AccessibilityOz

18



19



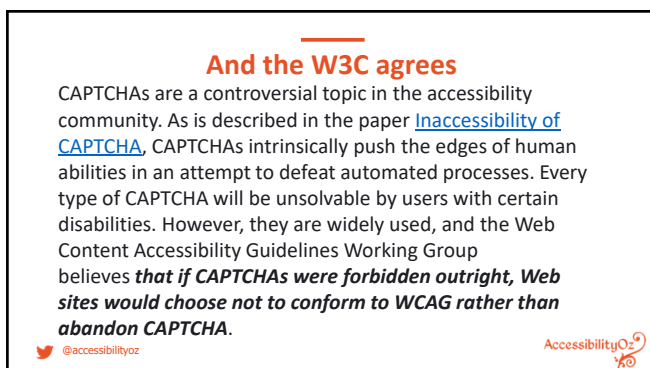
20



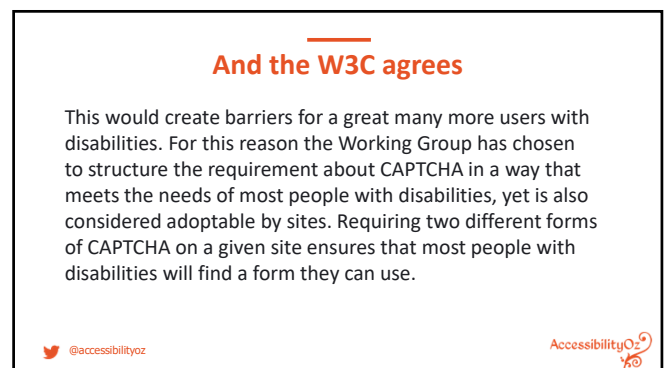
21



22



23



24

And the W3C agrees

Because some users with disabilities will still not be able to access sites that meet the minimum requirements, the Working Group provides recommendations for additional steps. Organizations motivated to conform to WCAG should be aware of the importance of this topic and should go as far beyond the minimum requirements of the guidelines as possible.

@accessibilityoz

AccessibilityOz

25

What about audio CAPTCHAs?

Also inherently inaccessible:

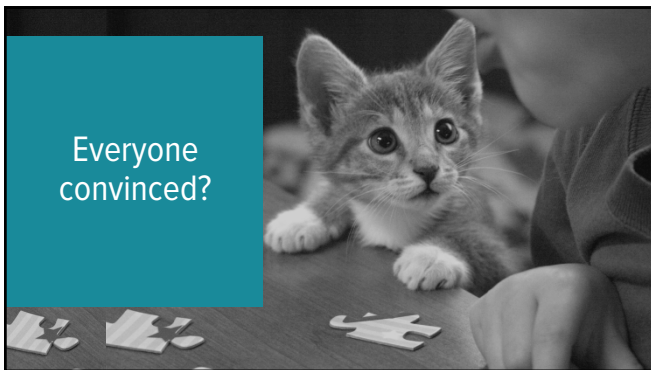
- Most bots can interpret speech – so the audio is often distorted (and therefore inaccessible)
- Audio CAPTCHAs are one and done – it is transient whereas a visual CAPTCHA is not persistent (and therefore inaccessible)
- The method to turn on the audio CAPTCHA may not be accessible

@accessibilityoz

AccessibilityOz

26

Everyone convinced?



27

What is the alternative?

If you **must** have CAPTCHA:

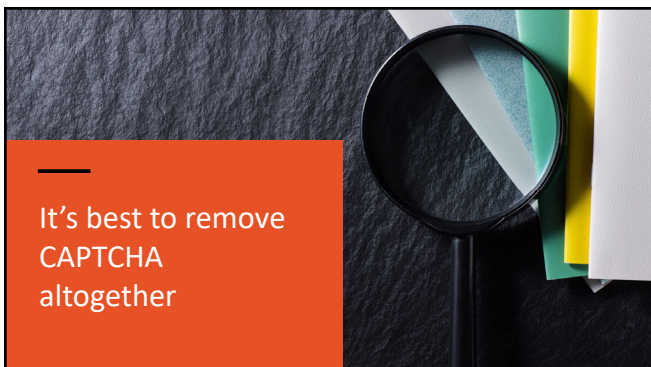
- Provide more than two modalities of CAPTCHA for a given action (and make sure they work!);
- Provide access to a human customer service representative who can bypass CAPTCHA; and
- Do not require CAPTCHAs for authorized users.

@accessibilityoz

AccessibilityOz

28

It's best to remove CAPTCHA altogether



29

What is the alternative to CAPTCHA?

Better alternatives:

- Multi-factor authentication
- Human test questions (e.g. Is fire hot or cold? Is grass green or purple?)
- Honeypot traps (fields that must be left blank, or the form is not submitted)
- Server-side spam filters and server-side validation

@accessibilityoz

AccessibilityOz

30

What is the alternative to CAPTCHA?

- Confirmation page (a screen after form submission that reads "Here is your information. Are you happy to submit this?")
- Timestamp your forms (if the form is submitted faster than humanly possible, odds are it's a spambot)
- Proof of work JavaScript code
- Heuristics of the user
- Limited-use accounts

@accessibilityoz

AccessibilityOz

31

Need to convince someone else?

<https://tinyurl.com/a11y-captcha>

@accessibilityoz



32

Let's talk forms



@accessibilityoz

33

WCAG: paradoxical to security?

- 2.2.1: Timing adjustable
- 3.3.1: Error Identification
- 3.3.3: Error Suggestion
- 3.3.4: Error Prevention (Legal, Financial, Data)
- 3.3.7: Redundant Entry
- 3.3.8: Accessible Authentication (Minimum)

@accessibilityoz

AccessibilityOz

34

2.2.1: Timing adjustable

For each time limit that is set by the content, at least one of the following is true:

- **Turn off:** The user is allowed to turn off the time limit before encountering it; or
- **Adjust:** The user is allowed to adjust the time limit before encountering it over a wide range that is at least ten times the length of the default setting; or

@accessibilityoz

AccessibilityOz

35

2.2.1: Timing adjustable

- **Extend:** The user is warned before time expires and given at least 20 seconds to extend the time limit with a simple action (for example, "press the space bar"), and the user is allowed to extend the time limit at least ten times; or
- **Real-time Exception:** The time limit is a required part of a real-time event (for example, an auction), and no alternative to the time limit is possible; or

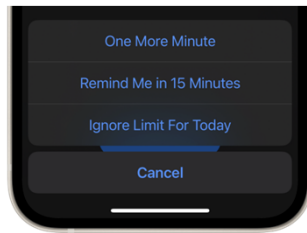
@accessibilityoz

AccessibilityOz

36

2.2.1: Timing adjustable

Provides both options to turn off or extend



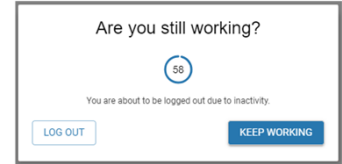
@accessibilityoz

AccessibilityOz

37

2.2.1: Timing adjustable

Provides option to extend

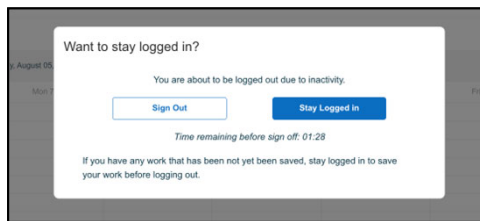


@accessibilityoz

AccessibilityOz

38

Provides option to extend



@accessibilityoz

AccessibilityOz

39

2.2.1: Timing adjustable

- **Essential Exception:** The time limit is essential and extending it would invalidate the activity; or
- **20 Hour Exception:** The time limit is longer than 20 hours.

@accessibilityoz

AccessibilityOz

40

3.3.1: Error Identification

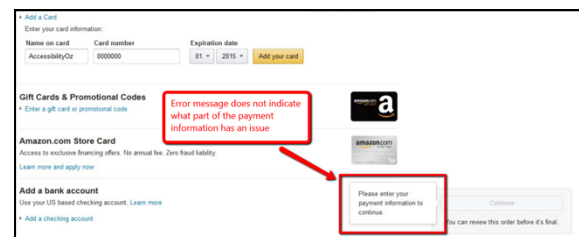
If an input error is automatically detected, the item that is in error is identified and the error is described to the user in text.

@accessibilityoz

AccessibilityOz

41

Try to give more information than this...



@accessibilityoz

AccessibilityOz

42

3.3.7: Redundant Entry

Information previously entered by or provided to the user that is required to be entered again in the same process is either:

- auto-populated, or
- available for the user to select.

@accessibilityoz

AccessibilityOz

49

3.3.7: Redundant Entry

Except when:

- re-entering the information is essential,
- **the information is required to ensure the security of the content,** or
- previously entered information is no longer valid.

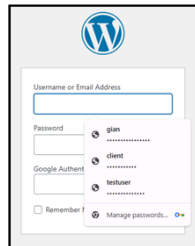
@accessibilityoz

AccessibilityOz

50

3.3.7: Redundant Entry

Use the
<autocomplete>
attribute



@accessibilityoz

AccessibilityOz

51

3.3.7: Redundant Entry

A cognitive function test (such as remembering a password or solving a puzzle) is not required for any step in an authentication process unless that step provides at least one of the following:

- **Alternative:** Another authentication method that does not rely on a cognitive function test.
- **Mechanism:** A mechanism is available to assist the user in completing the cognitive function test.

@accessibilityoz

AccessibilityOz

52

3.3.7: Redundant Entry

- **Object Recognition:** The cognitive function test is to recognize objects.
- **Personal Content:** The cognitive function test is to identify non-text content the user provided to the website.

@accessibilityoz

AccessibilityOz

53



Thank you for coming today

@accessibilityoz

AccessibilityOz


54


Access this presentation and all links at
www.accessibilityoz.com/about/conferences/


 @accessibilityoz



55

 accessibilityoz.com

 [AccessibilityOz](https://www.linkedin.com/company/AccessibilityOz)

 enquiries@accessibilityoz.com

56